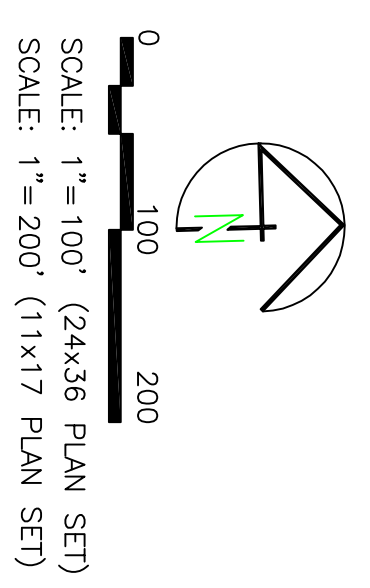


# RIDGEVIEW PARK CONCEPT PLAN

OWNERS:  
CHUGG FARMS  
2793 S. HIGHWAY 89-91  
WELLSVILLE, UTAH  
CORP. PRESIDING BISHOP LDS.

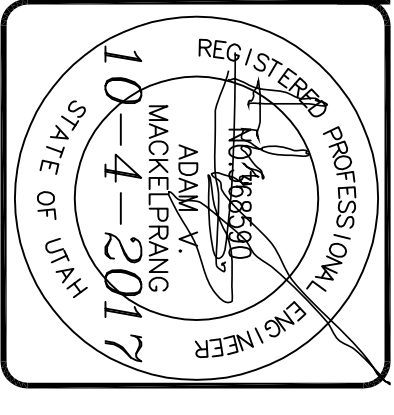
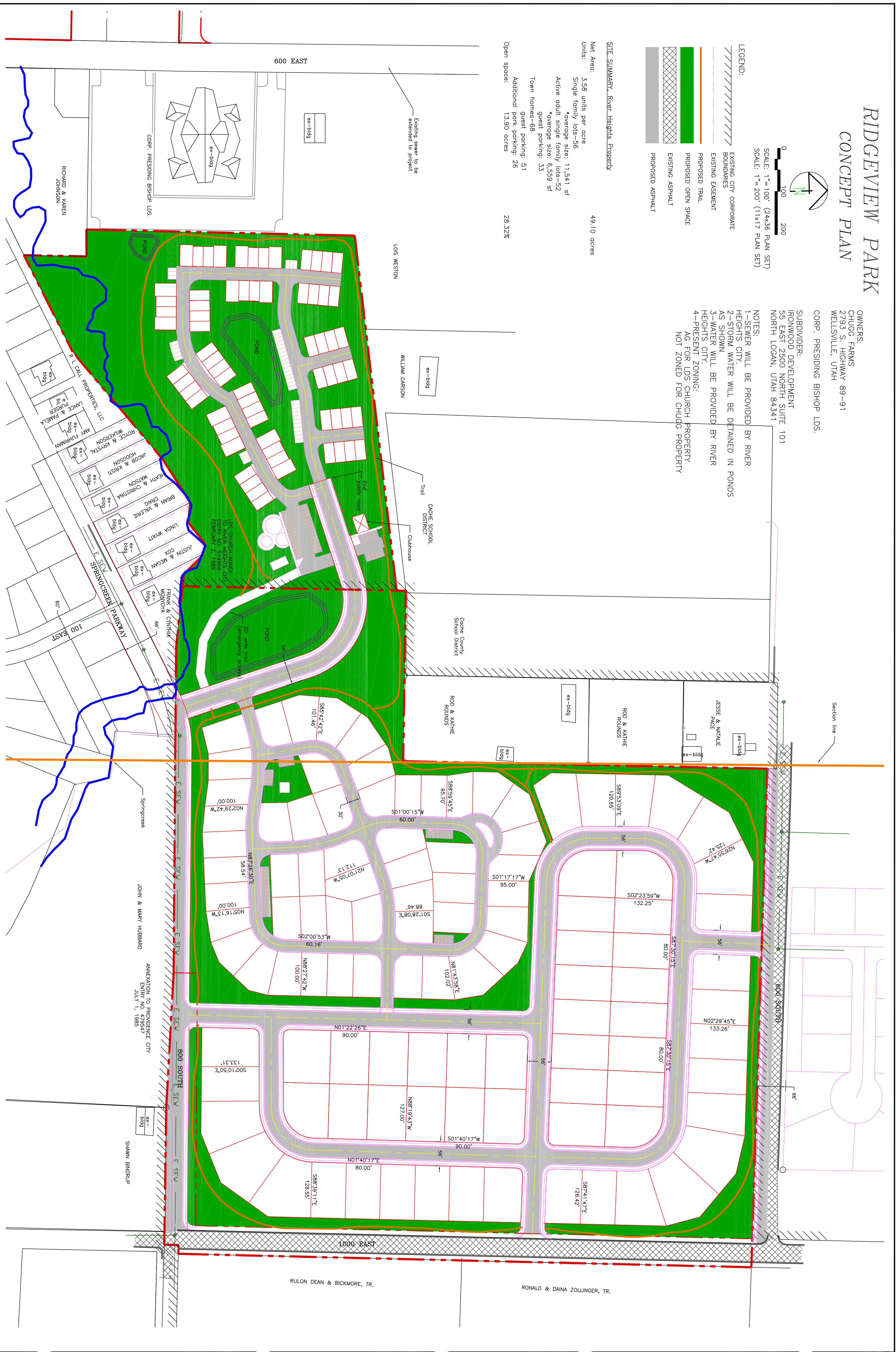
SUBDIVIDER:  
IRONWOOD DEVELOPMENT  
55 EAST 2500 NORTH SUITE 101  
NORTH LOGAN, UTAH 84341

NOTES:  
1-SEWER WILL BE PROVIDED BY RIVER HEIGHTS CITY.  
2-STORM WATER WILL BE DETAINED IN PONDS AS SHOWN.  
3-WATER WILL BE PROVIDED BY RIVER HEIGHTS CITY.  
4-PRESENT ZONING: AG FOR LDS CHURCH PROPERTY NOT ZONED FOR CHUGG PROPERTY



- LEGEND:
- EXISTING CITY CORPORATE BOUNDARIES
  - EXISTING EASEMENT
  - PROPOSED TRAIL
  - PROPOSED OPEN SPACE
  - EXISTING ASPHALT
  - PROPOSED ASPHALT

SITE SUMMARY: River Heights Property  
Net Area: 3.58 units per acre  
Units: Single family lots-56  
Average size: 11,541 sf  
Active adult single family lots-52  
Average size: 6,359 sf  
Town homes-68  
guest parking: 51  
Additional park parking: 26  
Open space: 13.90 acres  
28.32%



**AE** ALLIANCE CONSULTING ENGINEERS  
150 EAST 200 NORTH SUITE P  
LOGAN, UTAH 84321  
(435)755-5121  
alliancelogan@yahoo.com

No.	REVISIONS/ SUBMISSIONS	DATE

REVIEWED:	DRAWN:
CAD FILE:	PROJECT NO.:

PROJECT TITLE <b>RIDGEVIEW PARK</b>
DRAWING TITLE <b>CONCEPT PLAN</b>
DATE: 10.4.2017
DRAWING No. 1