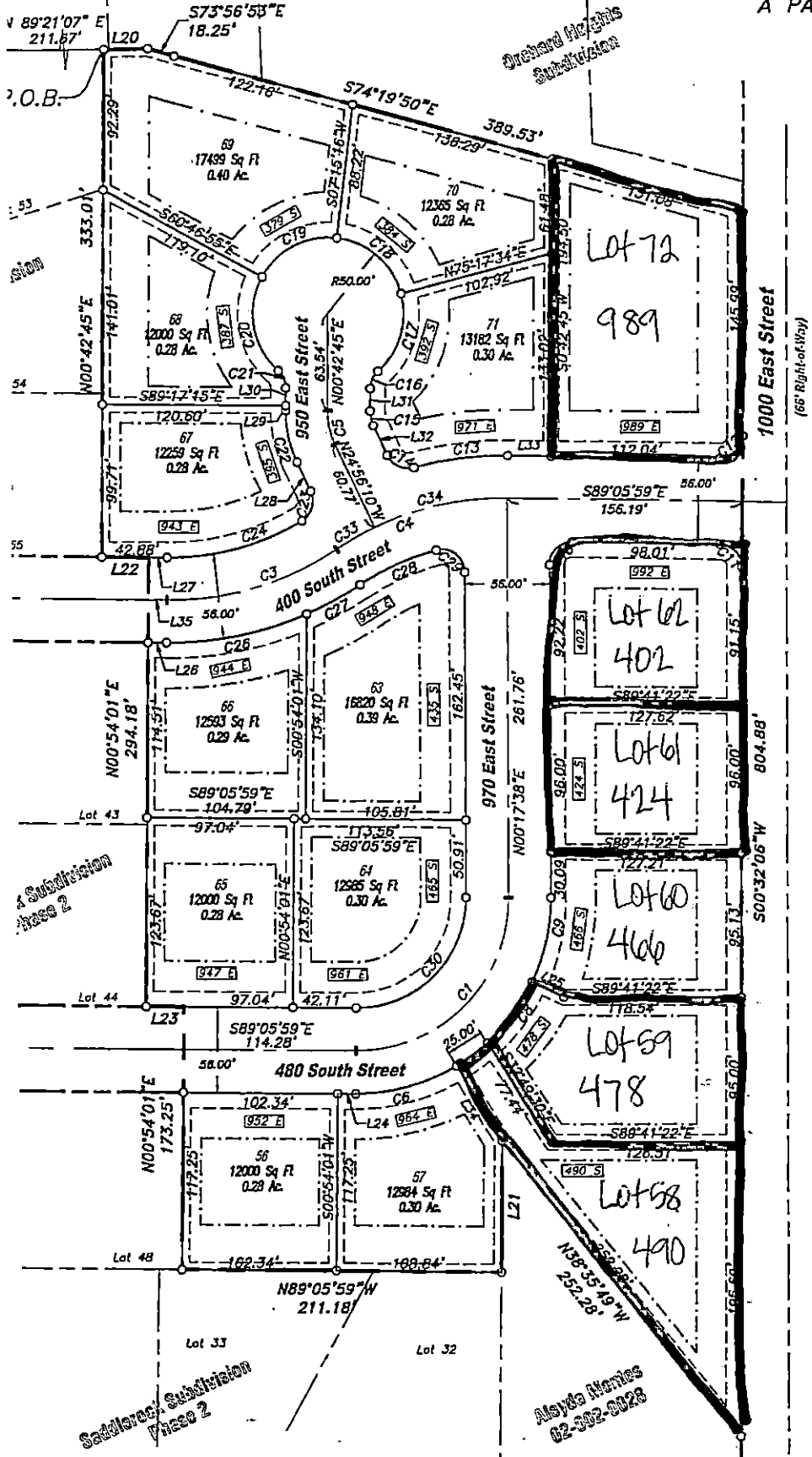


s of Bearings) 5433.19'

Northeast Corner Section 2
T11N, R1E, S.L.B.&M.
Found Cache County Brass Cap Mon.

Saddle Creek

A PART OF THE N



ARTIFICATE

MAYOR APPROVAL

CITY ENGINEERS' CERTIFICATE

EXAMINED AND FOUND
WITH THE INFORMATION
OTHER, IT MEETS THE
D BY COUNTY

PRESENTED TO THE RIVER HEIGHTS CITY MAYOR THIS
DAY OF _____ A.D. 2017, AT WHICH TIME
THIS SUBDIVISION WAS APPROVED.

I CERTIFY THAT I HAVE EXAMINED THIS
BE, IN ACCORDANCE WITH THE INFORMATION
IN THIS OFFICE AND THE CITY ORDINANCES